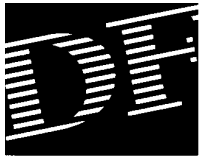


**FAN SERVICES
INCORPORATED™**

FUME HOOD FANS

**FOR LABORATORY HOODS AND OTHER CORROSIVE FUME EXHAUST
SERIES 2600**





FUME HOOD FANS

SPECIFICALLY DESIGNED FOR CORROSIVE FUME SYSTEMS

Fume Hood Fans are designed for exhausting fumes from laboratory hoods... both institutional and industrial. Exhausts from industrial hoods over acid or alkali vats are also primary applications for this rugged long-life unit. For quick, low-cost installation, Fume Hood Fans are shipped as a complete packaged ready-to-run unit. All Fume Hood Fans are completely checked at the factory to assure trouble-free operation. The standard Fume Hood Fan is equipped with a low speed (LS) forward-curved impeller. Non-overloading backward inclined impellers are available for size 1 and 1 1/4 (designated as the MS design). Corrosion resistant Monel (nickel-400), stainless steel, aluminum or coated steel impeller designs are available options for various service conditions. Every rotating assembly on a Fume Hood Fan is balanced both statically and dynamically.

HOUSINGS

The basic feature of the Fume Hood Fan is the heavy cast iron housing. Cast iron is inherently resistant to corrosion and the thick wall will give many years of service even without protective coverings, which can often fail prematurely due to improper surface preparation, insufficient coverage or coating damage. Where conditions are especially severe, however, the cast iron housing can be coated with vinyl, phenolic or epoxy coatings for added service life. Air dried Heresite coating is standard.

COVERS

Outdoor covers offer ventilated protection for the drive, motor and bearings as well as serving as a safety guard. These covers are easily removable for convenient access to all moving parts.

DRIVES

Fume Hood Fans have adjustable v-belt drives to permit limited changes in fan RPM as may be required by varying conditions. The entire drive is completely contained within the unit framework. Increases in fan speed (by adjusting motor pulley) should not be done without first consulting the applicable capacity table to avoid overloading the motor. Each drive has cast iron sheaves to further improve quiet operation and service life.



Size 1 LS
Fume Hood Fan Assembly

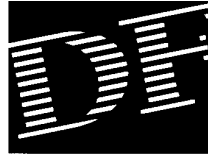


LS - Forward Curved Wheel

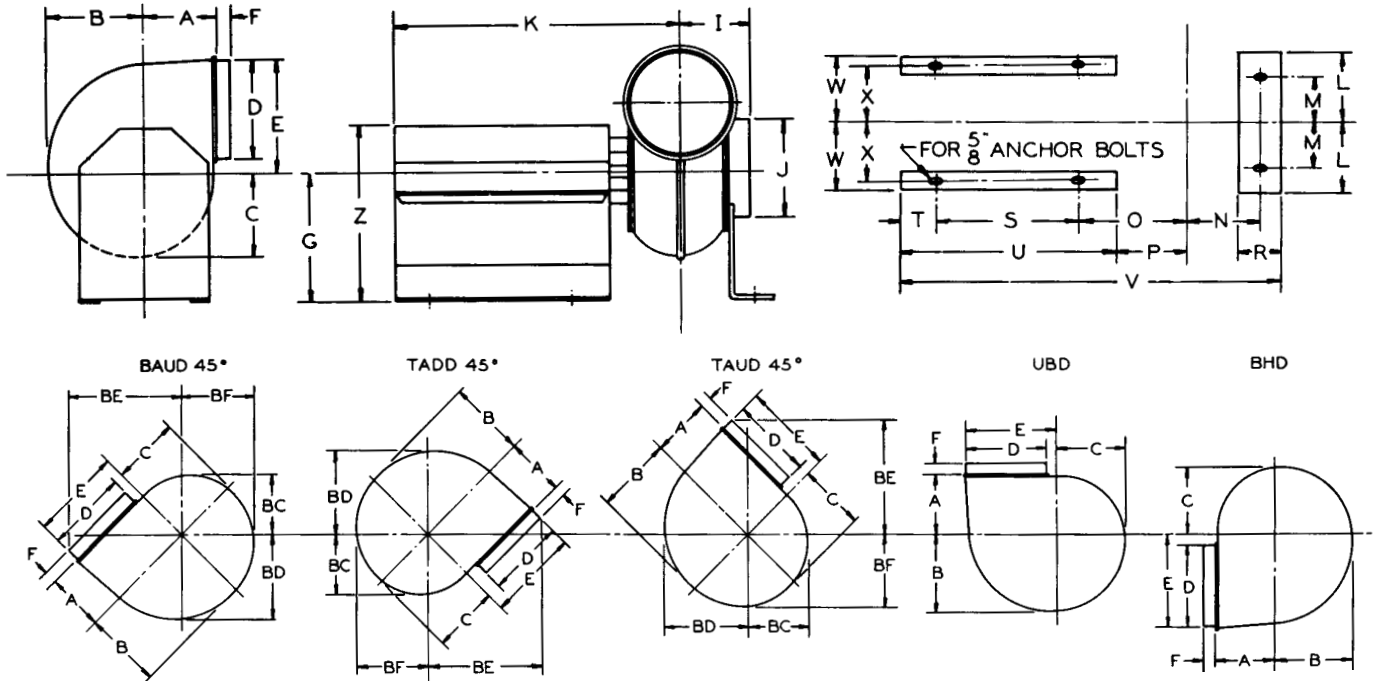


MS - Backward Inclined Wheel

DIMENSIONAL DATA



DIMENSIONS – IN INCHES



FUME HOOD DIMENSIONAL DATA

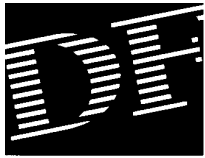
FAN SIZE	A	B	BC	BD	BE	BF	C	D*	E	F	G	I	J	K
5/8	6	7 7/16	6 1/4	7 7/8	11 1/16	7 1/16	6 5/8	7 1/2	8 3/8	1 1/4	14 7/8	5 1/4	8 1/8	22 13/16
3/4	7 1/16	8 7/8	7 7/8	9 3/8	12 7/8	8 3/8	7 7/8	9	10	1 1/4	14 7/8	5 1/2	9 3/4	22 9/16
1	9 1/4	11 9/16	9 3/4	12 5/16	16 5/8	11 1/8	10 5/16	12	13 1/16	1 1/2	14 7/8	7 3/16	13	24 3/4
1 1/4	11 9/16	14 1/16	12 3/16	13 1/2	20 3/16	14	13	15	16 5/8	1 1/2	17 1/2	9 1/8	16 1/2	28 1/4

FAN SIZE	L	M	N	O	P	R	S	T	U	V	W	X	Y	Z	SHAFT DIA.	KEYWAY IN DRIVE HUB	
																WIDTH	DEPTH
5/8				7 5/8	4 7/16		12	3 3/16	18 3/8		8 13/16	8 1/8	19 5/8	22	1	1/4	1/8
3/4	5 1/4	3 1/2	6	8 3/8	5 3/16	3	12	3 3/16	18 3/8	31	8 13/16	8 1/8	20 3/8	22	1	1/4	1/8
1	7	5	7 5/16	9 9/16	6 3/8	3	12	3 3/16	18 3/8	33 7/16	8 13/16	8 1/8	21 9/16	22	1	1/4	1/8
1 1/4	9	6 1/2	10 3/8	11 1/16	7 7/8	4	14	3 3/16	20 3/8	40 1/8	8 13/16	8 1/8	25 1/16	25	1 3/16	1/4	1/8

OUTLET DIMENSIONS—OUTSIDE — *

FUME HOOD SHIPPING WEIGHTS

FAN SIZE	1/6	1/4	1/3	1/2	3/4	1	1 1/2	2	3	5	7 1/2
5/8	147	147	147	157	157	157	159	163	183	201	241
3/4	165	165	165	175	175	175	177	181	201	219	259
1	250	250	250	260	260	260	262	266	286	304	344
1 1/4	385	385	385	395	395	395	397	401	421	435	475



SIZE 5/8 LS FUME HOOD FANS

WHEEL DIAMETER — 8.125"
TIP SPEED — RPM x 2.13

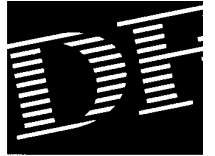
OUTLET — 7 1/2" DIA. OUTSIDE"
INLET — 8 1/8" DIA OUTSIDE

OUTLET AREA — .3068 SQ. FT. INSIDE

MOTOR IP	FAN RPM	1/4" SP		3/8" SP		1/2" SP		3/4" SP		1" SP		1 1/4" SP		1 1/2" SP		1 3/4" SP		2" SP		2 1/4" SP		2 1/2" SP		FAN RPM	MOTOR HP
		CFM	BHP	CFM	BHP	CFM	BHP	CFM	BHP	CFM	BHP	CFM	BHP	CFM	BHP	CFM	BHP	CFM	BHP	CFM	BHP	CFM	BHP		
1/6	700	260	0.01																					700	1/6
	740	305	0.02																					740	
	790	355	0.03																					790	
	840	405	0.04																					840	
	890	460	0.05	350	0.04																			890	
	940	500	0.06	410	0.05																			940	
	990	540	0.07	460	0.06	344	0.04																	990	
	1040	580	0.08	510	0.07	400	0.06																	1040	
	1090			560	0.08	460	0.08																	1090	
	1140			600	0.1	520	0.09																	1140	
	1190			640	0.12	570	0.11																	1190	
1240			680	0.14	620	0.13	470	0.09															1240		
1290					670	0.15	530	0.12															1290		
1340					710	0.18	590	0.15															1340		
1390					750	0.2	640	0.17															1390		
1440					790	0.22	690	0.2	550	0.15													1440		
1490							740	0.23	610	0.18													1490		
1540							785	0.26	670	0.22													1540		
1590							830	0.29	720	0.25	570	0.19											1590		
1640							870	0.32	770	0.29	650	0.24											1640		
1690							910	0.36	820	0.32	710	0.28											1690		
1740							950	0.39	870	0.36	760	0.32	610	0.24									1740		
1790							990	0.43	920	0.4	820	0.36	700	0.3									1790		
1840									970	0.45	870	0.41	760	0.35									1840		
1890									1010	0.5	920	0.46	820	0.41	680	0.33							1890		
1940									1050	0.54	970	0.51	880	0.46	760	0.39							1940		
1990									1090	0.59	1020	0.56	930	0.51	840	0.45	700	0.36					1990		
2040									1130	0.64	1060	0.61	970	0.56	890	0.51	770	0.43					2040		
2090											1100	0.66	1020	0.61	940	0.57	840	0.5					2090		
2140											1140	0.72	1060	0.68	990	0.63	900	0.57	790	0.49			2140		
2190											1180	0.78	1120	0.74	1040	0.69	960	0.64	850	0.56			2190		
2240											1220	0.85	1160	0.81	1080	0.76	1020	0.71	910	0.63	780	0.53	2240		
2290											1260	0.92	1200	0.88	1130	0.83	1070	0.78	970	0.7	870	0.62	2290		
2340													1240	0.94	1160	0.9	1120	0.85	1030	0.77	940	0.71	2340		
2390													1280	1.01	1210	0.97	1170	0.92	1080	0.85	1000	0.8	2390		
2440													1320	1.08	1260	1.04	1210	0.99	1130	0.93	1060	0.89	2440		
2490													1360	1.15	1310	1.11	1250	1.07	1180	1.01	1120	0.97	2490		
2540													1400	1.22	1350	1.19	1290	1.15	1220	1.09	1170	1.03	2540		
2590															1390	1.28	1330	1.23	1260	1.17	1220	1.12	2590		
2640															1430	1.37	1380	1.31	1320	1.26	1270	1.22	2640		
2690															1470	1.47	1420	1.42	1360	1.37	1320	1.32	2690		
2740																	1420	1.47	1370	1.42	1370	1.42	2740		

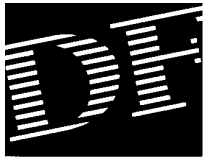
All capacities based on standard air (density .075 lb./cu. ft. — 70°F — 29.92" Hg Bar.)

SIZE 3/4 LS FUME HOOD FANS



		WHEEL DIAMETER — 9.75" TIP SPEED — RPM x 2.55				OUTLET — 9" DIA. OUTSIDE INLET — 9 3/4" DIA OUTSIDE				OUTLET AREA — .4418 SQ. FT. INSIDE												FAN RPM	MOTOR HP		
MOTOR HP	FAN RPM	1/4" SP		3/8" SP		1/2" SP		3/4" SP		1" SP		1 1/4" SP		1 1/2" SP		1 3/4" SP		2" SP		2 1/4" SP		2 1/2" SP		FAN RPM	MOTOR HP
		CFM	BHP	CFM	BHP	CFM	BHP	CFM	BHP	CFM	BHP	CFM	BHP	CFM	BHP	CFM	BHP	CFM	BHP	CFM	BHP	CFM	BHP		
1/6	640	480	0.03																					640	1/6
	700	580	0.05																					700	
	760	680	0.07	510	0.05																			760	
	790	730	0.09	590	0.07																			790	
	820	770	0.1	650	0.08																			820	
	850	810	0.12	710	0.1	560	0.08																	850	
	880	850	0.13	760	0.11	620	0.09																	880	
	910	890	0.14	810	0.13	680	0.11																	910	
	940	930	0.16	850	0.14	740	0.13																	940	
1/4	970	970	0.17	890	0.16	790	0.15																	970	
	1000	1000	0.19	930	0.17	840	0.16																	1000	
	1030	1030	0.21	970	0.19	890	0.19	640	0.13															1030	
	1060	1060	0.23	1020	0.22	940	0.21	720	0.15															1060	
	1090	1100	0.25	1060	0.24	980	0.23	790	0.18															1090	
	1120	1130	0.27	1100	0.25	1030	0.25	850	0.2															1120	
1/3	1150	1160	0.29	1140	0.28	1070	0.27	900	0.23															1150	
	1180	1190	0.32	1180	0.31	1120	0.3	960	0.26															1180	
	1210	1230	0.35	1220	0.34	1160	0.33	1010	0.29	790	0.22													1210	
1/2	1240	1260	0.38	1250	0.38	1190	0.36	1060	0.32	860	0.26													1240	
	1270			1280	0.41	1230	0.39	1100	0.35	930	0.29													1270	
	1300			1320	0.44	1280	0.42	1150	0.38	990	0.33													1300	
	1330			1350	0.48	1320	0.45	1190	0.41	1040	0.36	820	0.27											1330	
	1360			1380	0.52	1360	0.49	1240	0.45	1090	0.4	900	0.32											1360	
3/4	1390			1420	0.56	1390	0.55	1280	0.49	1140	0.44	970	0.36											1390	
	1420			1450	0.6	1430	0.56	1320	0.53	1190	0.47	1040	0.4											1420	
	1450			1470	0.64	1460	0.6	1370	0.56	1240	0.51	1110	0.44	890	0.36									1450	
	1480			1500	0.69	1490	0.64	1410	0.6	1290	0.56	1160	0.49	960	0.4									1480	
	1510			1530	0.74	1520	0.67	1450	0.64	1340	0.6	1210	0.54	1030	0.45									1510	
	1540			1560	0.79	1550	0.71	1490	0.68	1380	0.65	1260	0.58	1100	0.51									1540	
	1570					1580	0.75	1540	0.73	1430	0.69	1310	0.63	1170	0.56	970	0.45							1570	
1	1600					1610	0.8	1580	0.78	1470	0.74	1360	0.69	1230	0.62	1050	0.52							1600	
	1630					1640	0.86	1610	0.84	1520	0.79	1410	0.74	1280	0.67	1120	0.58							1630	
	1660					1670	0.9	1640	0.89	1560	0.85	1450	0.8	1330	0.72	1190	0.64	980	0.5					1660	
	1690					1700	0.95	1670	0.94	1600	0.9	1490	0.85	1380	0.78	1250	0.7	1060	0.57					1690	
	1720					1730	1.01	1710	1	1640	0.94	1530	0.89	1430	0.83	1300	0.75	1140	0.64					1720	
1 1/2	1750					1760	1.06	1750	1.05	1680	1.01	1580	0.94	1480	0.89	1360	0.81	1210	0.71					1750	
	1780					1790	1.11	1780	1.1	1720	1.07	1620	1.02	1530	0.96	1420	0.88	1290	0.79	1090	0.66			1780	
	1810							1810	1.16	1760	1.13	1670	1.08	1580	1.02	1470	0.95	1350	0.86	1170	0.74			1810	
	1840							1840	1.21	1800	1.19	1720	1.14	1620	1.09	1520	1.01	1400	0.93	1250	0.81			1840	
	1870							1880	1.27	1840	1.26	1760	1.21	1670	1.16	1570	1.08	1460	1	1320	0.88	1120	0.74	1870	
	1900							1910	1.34	1880	1.33	1810	1.29	1710	1.23	1620	1.15	1510	1.08	1390	0.96	1210	0.84	1900	
	1930							1940	1.42	1910	1.4	1850	1.36	1760	1.3	1670	1.23	1560	1.16	1450	1.05	1290	0.93	1930	
	1960							1980	1.49	1950	1.48	1890	1.43	1800	1.38	1720	1.31	1610	1.24	1510	1.14	1360	1.02	1960	
1990												1930	1.5	1850	1.46	1760	1.39	1660	1.33	1560	1.23	1420	1.09	1990	

All capacities based on standard air (density .075 lb./cu. ft. — 70°F — 29.92" Hg Bar.)



SIZE 1 LS FUME HOOD FANS

WHEEL DIAMETER — 13"
TIP SPEED — RPM x 3.41

OUTLET — 12" DIA. OUTSIDE
INLET — 13" DIA OUTSIDE

OUTLET AREA — .7854 SQ. FT. INSIDE

OTOR P	FAN RPM	1/4" SP		3/8" SP		1/2" SP		3/4" SP		1" SP		1 1/4" SP		1 1/2" SP		1 3/4" SP		2" SP		2 1/4" SP		2 1/2" SP		FAN RPM	MOTOR HP
		CFM	BHP	CFM	BHP	CFM	BHP	CFM	BHP	CFM	BHP	CFM	BHP	CFM	BHP	CFM	BHP	CFM	BHP	CFM	BHP	CFM	BHP		
/6	450	690	0.05																					450	1/6
	475	820	0.06																					475	
	500	930	0.08																					500	
	525	1030	0.1																					525	
	550	1130	0.12	830	0.09																			550	
	575	1230	0.14	960	0.11																			575	
/4	600	1320	0.16	1080	0.14																			600	
	625	1400	0.19	1190	0.17	910	0.12																	625	
	650	1480	0.22	1290	0.2	1060	0.15																	650	
/3	675	1560	0.25	1390	0.23	1180	0.19																	675	
	700	1640	0.28	1480	0.26	1290	0.23																	700	
/2	725	1720	0.31	1570	0.29	1390	0.26																	725	
	750	1800	0.35	1660	0.33	1500	0.3																	750	
	775	1880	0.39	1750	0.36	1590	0.34	1170	0.26															775	
/4	800	1970	0.43	1830	0.4	1680	0.38	1310	0.29															800	
	825	2050	0.47	1910	0.45	1770	0.43	1430	0.34															825	
	850	2130	0.52	1980	0.5	1860	0.47	1550	0.39															850	
	875	2220	0.58	2060	0.55	1940	0.52	1660	0.44	1170	0.29													875	
	900	2300	0.64	2150	0.6	2030	0.57	1760	0.5	1370	0.38													900	
1/2	925	2380	0.69	2230	0.6	2120	0.62	1860	0.55	1520	0.45													925	
	950	2460	0.75	2310	0.71	2200	0.67	1950	0.61	1640	0.52													950	
	975	2550	0.81	2390	0.77	2280	0.73	2040	0.68	1760	0.58													975	
	1000	2630	0.88	2470	0.84	2360	0.8	2140	0.74	1870	0.65	1490	0.54											1000	
	1025	2710	0.95	2550	0.91	2430	0.88	2230	0.81	1970	0.72	1640	0.59											1025	
	1050	2800	1.02	2640	0.97	2510	0.95	2310	0.88	2060	0.79	1770	0.67											1050	
	1075	2880	1.1	2720	1.01	2590	1.02	2400	0.96	2160	0.87	1890	0.75	1480	0.56									1075	
	1100	2960	1.19	2800	1.16	2670	1.1	2490	1.03	2260	0.96	2000	0.84	1670	0.63									1100	
	1125	3040	1.27	2880	1.22	2750	1.18	2570	1.09	2350	1.05	2100	0.93	1820	0.76									1125	
	1150	3120	1.35	2960	1.3	2830	1.27	2640	1.17	2460	1.14	2200	1.02	1930	0.86									1150	
1	1175	3210	1.47	3040	1.42	2910	1.38	2710	1.29	2550	1.24	2300	1.13	2050	0.98	1680	0.79							1175	
	1200	3300	1.59	3130	1.54	3000	1.48	2790	1.45	2640	1.34	2400	1.24	2160	1.12	1860	0.93							1200	
	1225	3400	1.7	3220	1.64	3090	1.58	2870	1.52	2730	1.44	2500	1.34	2270	1.24	2000	1.04							1225	
	1250	3500	1.8	3310	1.75	3180	1.7	2950	1.65	2810	1.54	2600	1.45	2370	1.34	2110	1.16	1810	0.97					1250	
	1275			3400	1.86	3270	1.82	3040	1.73	2890	1.64	2700	1.56	2480	1.43	2250	1.29	1950	1.08					1275	
	1300			3490	1.98	3370	1.93	3120	1.83	2970	1.75	2800	1.67	2580	1.56	2350	1.42	2090	1.2					1300	
	1325							3200	1.96	3050	1.86	2890	1.8	2680	1.68	2450	1.55	2210	1.34	1880	1.1			1325	
	1350									3120	1.98	2970	1.91	2770	1.79	2560	1.66	2340	1.47	2040	1.24			1350	
	1375													2860	1.9	2670	1.78	2460	1.62	2190	1.43			1375	
	1400															2770	1.91	2560	1.77	2330	1.58	2050	1.32	1400	
2	1425																2680	1.93	2460	1.72	2200	1.47	1425		
	1450																		2570	1.88	2340	1.62	1450		
	1475																				2450	1.77	1475		
	1500																					2580	1.93	1500	

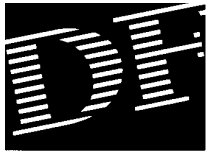
All capacities based on standard air (density .075 lb./cu. ft. — 70°F — 29.92" Hg Bar.)

SIZE 1 1/4 LS FUME HOOD FANS



		WHEEL DIAMETER — 16.25"				OUTLET — 15" DIA. OUTSIDE				INLET — 16 1/2" DIA OUTSIDE				OUTLET AREA — 1.227 SQ. FT. INSIDE											
		TIP SPEED — RPM x 4.21																							
MOTOR HP	FAN RPM	1/4" SP		3/8" SP		1/2" SP		3/4" SP		1" SP		1 1/4" SP		1 1/2" SP		1 3/4" SP		2" SP		2 1/4" SP		2 1/2" SP		FAN RPM	MOTOR HP
		CFM	BHP	CFM	BHP	CFM	BHP	CFM	BHP	CFM	BHP	CFM	BHP	CFM	BHP	CFM	BHP	CFM	BHP	CFM	BHP	CFM	BHP		
1/6	365	1170	0.08																					365	1/6
	390	1390	0.1																					390	
	415	1580	0.14																					415	
1/4	440	1760	0.18	1490	0.13																			440	1/4
	465	1930	0.22	1600	0.18																			465	
1/3	490	2100	0.27	1800	0.23																			490	1/3
	515	2260	0.32	1990	0.28	1630	0.23																	515	
1/2	540	2420	0.38	2160	0.33	1860	0.29																	540	1/2
	565	2580	0.44	2320	0.39	2070	0.35																	565	
3/4	590	2730	0.51	2490	0.46	2260	0.42																	590	1/2
	615	2890	0.58	2650	0.54	2430	0.49	1770	0.35															615	
1	640	3040	0.68	2810	0.63	2610	0.56	2070	0.45															640	1/2
	665	3190	0.77	2980	0.71	2780	0.66	2300	0.55															665	
	690	3340	0.86	3140	0.8	2940	0.75	2520	0.65															690	
1 1/2	715	3490	0.97	3290	0.9	3090	0.86	2700	0.75	2100	0.57													715	3/4
	740	3630	1.07	3450	1.01	3240	0.96	2890	0.85	2400	0.71													740	
	765	3780	1.18	3600	1.12	3390	1.07	3060	0.95	2630	0.82													765	
2	790	3930	1.3	3750	1.124	3550	1.19	3220	1.06	2840	0.94	2230	0.74											790	1
	815	4070	1.43	3900	1.38	3720	1.32	3390	1.2	3040	1.07	2570	0.9											815	
	840	4240	1.57	4100	1.52	3880	1.46	3550	1.35	3230	1.21	2810	1.05											840	
3	865	4400	1.72	4310	1.66	4040	1.61	3720	1.49	3410	1.36	3030	1.2	224	0.95									865	1 1/2
	890	4550	1.87	4460	1.81	4200	1.75	3890	1.64	3580	1.51	3230	1.35	2750	1.14									890	
	915	4700	2.03	4500	1.96	4350	1.9	4050	1.8	3740	1.67	3420	1.51	3010	1.32									915	
5	940	4850	2.29	4680	2.16	4500	2.09	4210	1.97	3910	1.84	3600	1.68	3250	1.52	2700	1.25							940	1 1/2
	965	5010	2.45	4840	2.36	4650	2.28	4370	2.15	4080	2.02	3790	1.85	3470	1.72	3050	1.49							965	
	990	5160	2.64	4980	2.56	4800	2.48	4520	2.33	4240	2.21	3970	2.04	3640	1.92	3290	1.71	2700	1.36					990	
5	1015	5310	2.84	5120	2.78	4950	2.68	4680	2.52	4400	2.41	4140	2.24	3850	2.12	3500	1.92	3010	1.68					1015	2
	1040	5470	3.05	5270	3	5100	2.89	4830	2.74	4550	2.63	4300	2.45	4030	2.33	3700	2.15	3290	1.88					1040	
	1065	5620	3.27	5420	3.23	5250	3.12	4990	2.98	4710	2.85	4460	2.67	4200	2.55	3900	2.38	3550	2.14	3050	1.84			1065	
5	1090	5780	3.6	5560	3.47	5400	3.35	5140	3.21	4880	3.08	4630	2.9	4380	2.79	4100	2.61	3790	2.4	3390	2.12			1090	3
	1115	5930	3.84	5690	3.67	5550	3.58	5290	3.45	5050	3.32	4790	3.14	4550	3.04	4290	2.84	4010	2.66	3640	2.36	3060	1.98	1115	
	1140	6090	4.09	5890	3.94	5700	3.82	5440	3.69	5210	3.57	4940	3.4	4710	3.3	4470	3.1	4210	2.92	3890	2.66	3440	2.4	1140	
5	1165	6250	4.35	6100	4.25	5850	4.12	5590	4.01	5360	3.85	5100	3.68	4880	3.55	4640	3.37	4390	3.18	4100	2.96	3750	2.69	1165	3
	1190	6410	4.63	6200	4.56	6000	4.5	5740	4.36	5500	4.12	5250	3.98	5040	3.8	4800	3.63	4550	3.44	4300	3.24	3970	2.97	1190	
	1210	6560	4.93	6300	4.86	6150	4.75	5890	4.63	5640	4.39	5400	4.2	5190	4.05	4950	3.87	4710	3.7	4450	3.5	4160	3.25	1210	
5	1230					6300	5	6000	4.87	5780	4.66	5550	4.52	5300	4.3	5090	4.12	4850	3.94	4600	3.72	4320	3.48	1230	5

All capacities based on standard air (density .075 lb./cu. ft. — 70°F — 29.92" Hg Bar.)

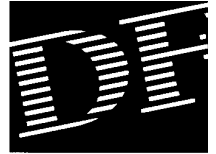


SIZE 1 MS FUME HOOD FANS

TIP SPEED — RPM x 3.21				INLET — 13" DIA OUTSIDE								OUTLET AREA — .7854 SQ. FT. INSIDE								FAN RPM	MOTOR HP					
MOTOR HP	FAN RPM	1/4" SP		3/8" SP		1/2" SP		3/4" SP		1" SP		1 1/4" SP		1 1/2" SP		1 3/4" SP		2" SP		2 1/4" SP		2 1/2" SP		FAN RPM	MOTOR HP	
		CFM	BHP	CFM	BHP	CFM	BHP	CFM	BHP	CFM	BHP	CFM	BHP	CFM	BHP	CFM	BHP	CFM	BHP	CFM	BHP	CFM	BHP			
1/6	900	631	0.05	470	0.05																			900	1/6	
	950	694	0.06	556	0.06																					950
	1000	756	0.07	632	0.07	459	0.06																			1000
	1050	815	0.09	703	0.08	563	0.08																			1050
	1100	873	0.1	769	0.1	647	0.09																			1100
	1150	930	0.11	833	0.11	723	0.11																			1150
	1200	986	0.13	895	0.13	794	0.12																			1200
	1250	1041	0.14	956	0.14	862	0.14	619	0.12																	1250
1/4	1300	1096	0.16	1015	0.16	927	0.16	714	0.15																1300	
	1350	1150	0.18	1073	0.18	990	0.18	797	0.17																1350	
	1400	1204	0.2	1130	0.2	1051	0.2	873	0.19	612	0.16														1400	
	1450	1257	0.22	1186	0.23	1112	0.22	945	0.22	728	0.19														1450	
1/3	1500	1310	0.25	1241	0.25	1170	0.25	1014	0.24	822	0.22														1500	
	1550	1362	0.27	1296	0.28	1228	0.28	1081	0.27	906	0.25														1550	
	1600	1414	0.3	1351	0.3	1286	0.3	1145	0.3	984	0.28	770	0.26												1600	
1/2	1650	1466	0.33	1405	0.33	1342	0.33	1208	0.33	1057	0.32	871	0.29												1650	
	1700			1458	0.36	1398	0.36	1270	0.36	1127	0.35	959	0.33												1700	
	1750			1512	0.4	1453	0.4	1330	0.39	1195	0.39	1040	0.37	837	0.33										1750	
	1800			1565	0.43	1508	0.43	1390	0.43	1261	0.42	1116	0.41	940	0.38											1800
	1850			1617	0.47	1562	0.47	1449	0.47	1326	0.46	1189	0.45	1030	0.42	804	0.38									1850
3/4	1900			1670	0.5	1616	0.51	1506	0.51	1389	0.5	1259	0.49	1112	0.47	926	0.43									1900
	1950			1722	0.55	1670	0.55	1564	0.55	1451	0.54	1327	0.53	1190	0.51	1026	0.48									1950
	2000			1774	0.59	1724	0.59	1620	0.59	1511	0.59	1394	0.58	1264	0.56	1115	0.53	918	0.49							2000
	2050			1826	0.63	1777	0.63	1676	0.64	1571	0.63	1459	0.63	1336	0.61	1198	0.59	1029	0.55							2050
	2100					1829	0.68	1732	0.68	1630	0.68	1522	0.68	1405	0.66	1276	0.64	1125	0.61	918	0.55					2100
1	2150					1882	0.73	1787	0.73	1689	0.73	1585	0.73	1473	0.72	1351	0.7	1212	0.67	1040	0.62					2150
	2200					1924	0.78	1842	0.79	1746	0.79	1646	0.78	1539	0.77	1423	0.75	1294	0.73	1142	0.69					2200
	2250					1987	0.84	1896	0.84	1804	0.84	1706	0.84	1603	0.83	1493	0.81	1372	0.79	1234	0.76	1059	0.71			2250
	2300					2039	0.89	1951	0.9	1860	0.9	1766	0.9	1667	0.89	1561	0.87	1446	0.85	1318	0.82	1167	0.78			2300
	2350					2091	0.95	2004	0.96	1917	0.96	1825	0.96	1729	0.95	1627	0.94	1518	0.92	1399	0.89	1262	0.85			2350
1 1/2	2400							2058	1.02	1972	1.02	1884	1.02	1791	1.01	1693	1	1588	0.98	1475	0.96	1349	0.93			2400
	2450							2111	1.08	2028	1.09	1941	1.09	1852	1.08	1757	1.07	1657	1.05	1549	1.03	1431	1			2450
	2500							2165	1.15	2083	1.15	1999	1.15	1912	1.15	1820	1.14	1724	1.13	1621	1.11	1510	1.08			2500
	2550							2217	1.22	2138	1.22	2056	1.23	1971	1.22	1882	1.21	1789	1.2	691	1.18	1585	1.16			2550
	2600							2270	1.29	2192	1.3	2112	1.3	2030	1.3	1944	1.29	1854	1.28	1759	1.26	1658	1.24			2600
2	2650							2323	1.37	2246	1.37	2168	1.38	2088	1.37	2004	1.37	1917	1.36	1826	1.34	1729	1.32			2650
	2700							2375	1.45	2300	1.45	2224	1.45	2145	1.45	2064	1.45	1980	1.44	1892	1.42	1799	1.4			2700
	2750							2427	1.53	2354	1.53	2279	1.54	2203	1.54	2124	1.53	2042	1.52	1956	1.51	1867	1.49			2750
	2800							2479	1.61	2407	1.62	2334	1.62	2259	1.62	2182	1.62	2103	1.61	2020	1.6	1934	1.58			2800
	2850							2531	1.7	2460	1.71	2389	1.71	2316	1.71	2241	1.71	2163	1.7	2083	1.69	1999	1.68			2850
2900										2513	1.8	2443	1.8	2372	1.8	2298	1.8	2223	1.8	2145	1.79	2064	1.77			2900
2950										2566	1.89	2497	1.9	2427	1.9	2356	1.9	2282	1.89	2206	1.88	2128	1.87			2950

All capacities based on standard air (density .075 lb./cu. ft. — 70°F — 29.92" Hg Bar.)

SIZE 1 1/4 MS FUME HOOD FANS



WHEEL DIAMETER — 15"				OUTLET — 15" DIA. OUTSIDE				OUTLET AREA — 1.227 SQ. FT. INSIDE																	
TIP SPEED — RPM x 3.93				INLET — 16 1/2" DIA OUTSIDE																					
MOTOR HP	FAN RPM	1/4" SP		3/8" SP		1/2" SP		3/4" SP		1" SP		1 1/4" SP		1 1/2" SP		2" SP		2 1/4" SP		2 1/2" SP		FAN RPM	MOTOR HP		
		CFM	BHP	CFM	BHP	CFM	BHP	CFM	BHP	CFM	BHP	CFM	BHP	CFM	BHP	CFM	BHP	CFM	BHP	CFM	BHP				
1/6	750	981	0.08	755	0.08																	750	1/6		
	800	1096	0.1	903	0.1																	800			
	850	1206	0.12	1035	0.12	818	0.11															850			
	900	1313	0.15	1158	0.15	975	0.14															900			
1/4	950	1417	0.17	1275	0.17	1113	0.17															950	1/4		
	1000	1519	0.2	1387	0.2	1241	0.2	842	0.17													1000			
1/3	1050	1620	0.24	1496	0.23	1362	0.23	1032	0.21													1050	1/3		
	1100	1719	0.27	1603	0.27	1479	0.27	1188	0.25													1100			
1/2	1150	1818	0.31	1708	0.31	1591	0.31	1327	0.29	950	0.25											1150	1/2		
	1200	1915	0.35	1810	0.35	1701	0.35	1458	0.34	1149	0.31											1200			
3/4	1250	2012	0.4	1912	0.4	1808	0.4	1582	0.39	1311	0.36											1250	3/4		
	1300	2108	0.44	2012	0.45	1914	0.45	1702	0.44	1456	0.42	1126	0.38									1300			
1	1350	2203	0.5	2111	0.5	2017	0.5	1817	0.5	1591	0.48	1314	0.44									1350	1		
	1400	2298	0.55	2210	0.56	2120	0.56	1930	0.55	1720	0.54	1473	0.51									1400			
1 1/2	1450			2307	0.62	2221	0.62	2041	0.62	1843	0.61	1618	0.58	1337	0.54							1450	1 1/2		
	1500			2404	0.68	2321	0.69	2149	0.69	1962	0.68	1755	0.65	1509	0.62							1500			
2	1550			2500	0.75	2420	0.76	2255	0.76	2078	0.75	1884	0.73	1663	0.7	1381	0.64					1550	2		
	1600			2596	0.83	2519	0.83	2360	0.83	2192	0.83	2009	0.81	1805	0.78	1564	0.74					1600			
3	1650			2692	0.91	2617	0.91	2464	0.91	2303	0.91	2130	0.9	1940	0.87	1724	0.83	1448	0.77			1650	3		
	1700			2787	0.99	2714	1	2566	1	2412	1	2247	0.99	2069	0.96	1871	0.93	1636	0.88			1700			
4	1750					2811	1.09	2668	1.09	2520	1.09	2363	1.08	2194	1.06	2009	1.03	1800	0.99	1536	0.92	1750	4		
	1800					2907	1.18	2769	1.19	2626	1.19	2475	1.18	2315	1.16	2142	1.14	1950	1.1	1724	1.04	1800			
5	1850					3003	1.28	2868	1.29	2730	1.29	2586	1.28	2433	1.27	2270	1.25	2091	1.21	1890	1.16	1641	1.09	1850	5
	1900					3098	1.39	2968	1.39	2834	1.4	2695	1.39	2549	1.38	2394	1.36	2226	1.33	2042	1.29	1827	1.23	1900	
6	1950					3193	1.5	3066	1.51	2937	1.51	2803	1.51	2663	1.5	2514	1.48	2356	1.45	2184	1.41	1992	1.36	1950	6
	2000					3288	1.62	3164	1.62	3039	1.63	2909	1.63	2774	1.62	2633	1.6	2482	1.58	2321	1.54	2144	1.5	2000	
7	2050							3262	1.75	3140	1.75	3014	1.75	2884	1.75	2748	1.73	2605	1.71	2452	1.68	2287	1.64	2050	7
	2100							3359	1.88	3240	1.88	3119	1.88	2993	1.88	2862	1.87	2725	1.85	2579	1.82	2424	1.79	2100	
8	2150							3455	2.01	3340	2.02	3222	2.02	3100	2.02	2974	2.01	2842	1.99	2703	1.97	2556	1.94	2150	8
	2200							3552	2.16	3439	2.16	3324	2.17	3206	2.16	3084	2.16	2957	2.14	2825	2.12	2685	2.09	2200	
9	2250							3647	2.31	3537	2.31	3426	2.32	3311	2.32	3193	2.31	3071	2.3	2943	2.28	2810	2.25	2250	9
	2300							3743	2.46	3635	2.47	3526	2.47	3415	2.48	3301	2.47	3138	2.46	3060	2.44	2932	2.42	2300	
10	2350							3838	2.62	3733	2.63	3627	2.64	3518	2.64	3407	2.64	3293	2.63	3175	2.61	3051	2.59	2350	10
	2400							3933	2.79	3833	2.8	3726	2.81	3621	2.81	3513	2.81	3402	2.8	3288	2.79	3169	2.77	2400	
12	2450							4027	2.97	3927	2.98	3826	2.99	3723	2.99	3618	2.99	3510	2.99	3399	2.97	3284	2.96	2450	12
	2500									4023	3.17	3924	3.17	3824	3.18	3721	3.18	3617	3.17	3509	3.16	3398	3.15	2500	
15	2550									4119	3.36	4022	3.37	3924	3.37	3824	3.37	3722	3.37	3618	3.36	3511	3.35	2550	15
	2600									4215	3.56	4120	3.57	4024	3.57	3927	3.58	3827	3.57	3726	3.57	3622	3.56	2600	
18	2650									4311	3.76	4218	3.78	4124	3.78	4028	3.79	3932	3.79	3833	3.78	3731	3.77	2650	18
	2700									4406	3.98	4315	3.99	4222	4	4129	4	4035	4	3938	4	3840	3.99	2700	
20	2750									4501	4.2	4411	4.21	4321	4.22	4230	4.23	4138	4.23	4043	4.23	3947	4.22	2750	20
	2800									4596	4.43	4508	4.45	4419	4.46	4330	4.46	4240	4.47	4148	4.47	4054	4.46	2800	

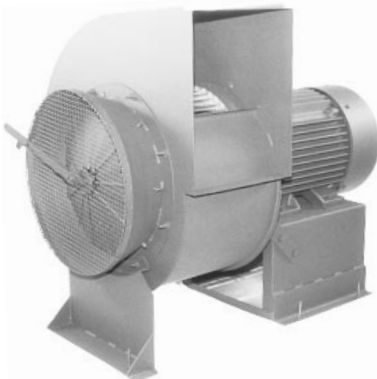
All capacities based on standard air (density .075 lb./cu. ft. — 70°F — 29.92" Hg Bar.)

V-BELT DRIVES

All V-Belt Drives are of the adjustable type. Unless otherwise specified, drives will be selected to provide a maximum speed of approximately 15% above the operating speed, unless this would overload the motor beyond the overload service factor. Low speed will be a variable dependent on drive selected. All drives will

UNI-COMBUSTION FANS

Complete fan assemblies and parts for supplying combustion air for oil, gas and coal firing. Built in 11 basic sizes with capacities from 200 to 24,000 CFM at static pressures to 10" W.G. with vortex inlet damper control for improved volume regulation and power saving.
Specify Bulletin 18001.



Arrangement 4E Assembly



UC Wheel -
Internal Hub



UC Wheel -
External Hub



Multiple Width Wheels

FUME HOOD FANS

Complete Fan Assemblies including fans, housings, drives and covers for exhausting fumes from industrial and institutional laboratory hoods or other corrosive fume exhaust systems. Completely packaged, ready-to-run in four basic sizes with capacities from 250 to 6300 CFM at static pressures to 5" W.G. Available with Forward Curved or Backward Inclined fan wheels.

Specify Bulletin 26001.



Fume Hood Fan Assembly

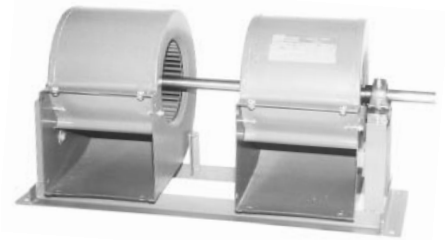


Fume Hood Wheels With
Pressure Bars

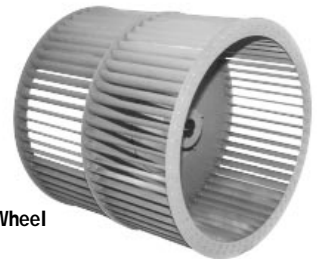
UNITARY, SINGLE AND DUPLEX FANS

Complete fan assemblies, parts or kits designed for heavy duty applications, including ovens, dryers, air conditioning units, heaters, coolers, condensers and air curtains. Fully riveted or staked fan wheels with welded housings. Capacities from 150 to 88,000 CFM at static pressures to 8" W.G. and temperatures to 1000° F.

Specify Bulletin 6131.



DFB Duplex Fan Assembly



DF Wheel

Wheel Diameters 6-1/2" through 32-1/2"

Custom Fan Assemblies & Kits

Individual Wheels, Housings, and Component Parts Available

Aluminum, Stainless Steel, Monel, and Galvanized Steel Construction